

eCanvas 4.2



End User Manual

Table of Contents – eCanvas System

- 1.0 [eCanvas System Hardware Specifications](#)
- 1.1 [eCanvas System Software Specifications](#)
- 1.2 [Components of the eCanvas Software Console](#)
- 1.3 [Components of the eCanvas Software Toolbar](#)
- 1.4 [Bluetooth Installation Setup Guide](#)
- 1.5 [eCanvas: Downloading and Software Installation Guide](#)
- 1.6 [Running your eCanvas Interactive Whiteboard System](#)
- 1.7 [Trouble Shooting Guide](#)
 - 1.7a [Wiimote Connection Error - Fix](#)
 - 1.7b [Inactive State of eCanvas Toolbar - Fix](#)
 - 1.7c [WiimoteDemo has stopped working - Fix](#)

eCanvas System Hardware Specifications

Hardware

- **External Bluetooth Adaptor**
 - Dongle USB 2.0
 - Plug and play
 - Maximum wireless distance: 10-20m
 - Supports Microsoft Windows Bluetooth Stack (Windows XP, Vista and Windows 7)
- **Infra Red Pen**
 - 1- AAA battery powered
- **Ceiling Mount/ Desktop Stand**
 - Height of Mount: 10.75 inches/26.5cm - adjustable height
 - Scissor clip for T-bar and ceiling mount plate (desktop display and ceiling mount)
 - Manufactured using solid steel
 - Metal pivot ballhead
- **Genuine Nintendo Wiimote Game Controller** (Nintendo Warranty)
- **Power Pack**
 - Electrical outlet Input: 100V-240V AC 50/60Hz
 - Outlet faces available: North America, South America, Europe, UK, Australia/New Zealand.
 - 110-volt and/or 220-volt electrical outlet
 - 3 Volt AC/DC Adaptor
 - Cord length: 9.75ft./3m
 - Inset ¼ inch 20 thread count nut
- **Power Pack Extension Cord**
 - Cord length: 19.5 ft./6m
- **Wireless/Remote Power Control** (up to 20 ft/6m)

Warranty – 90 Days All Parts

[Top](#)

eCanvas System Software Specifications

Software

Hardware System Requirements for Software:

- RAM Memory 1.0 G (minimum)
- Internal or External Bluetooth Adapter
- [eCanvas System](#) (Complete Interactive Whiteboard Hardware from [yIR Inc.](#))

Software System Pre-Requisites:

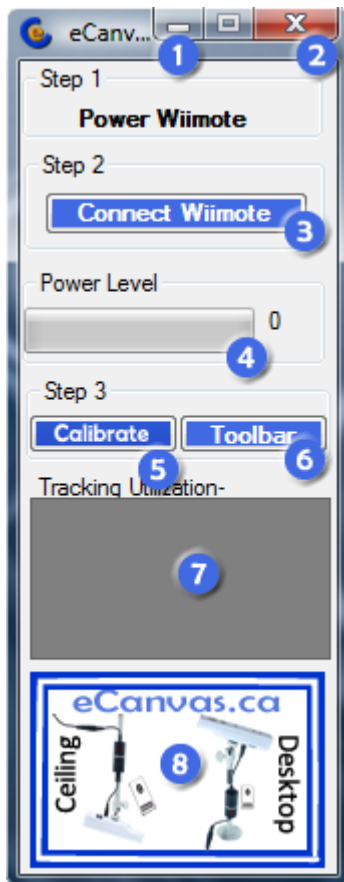
- Windows Operating System
- [Microsoft .NET Framework 3.5](#)
- [Microsoft .NET Framework 3.5 \(with Service Pack 1\)](#)
- [Microsoft .NET Framework 4.0 Client Package](#)
- [Microsoft .NET Framework 4.0 Full package](#)
- Microsoft Bluetooth Drivers (already integrated in Windows Operating System)

Windows Operating System

- Windows 2000, 2003, 2008
- Windows XP Windows
- Windows Vista
- Windows 7

[Top](#)

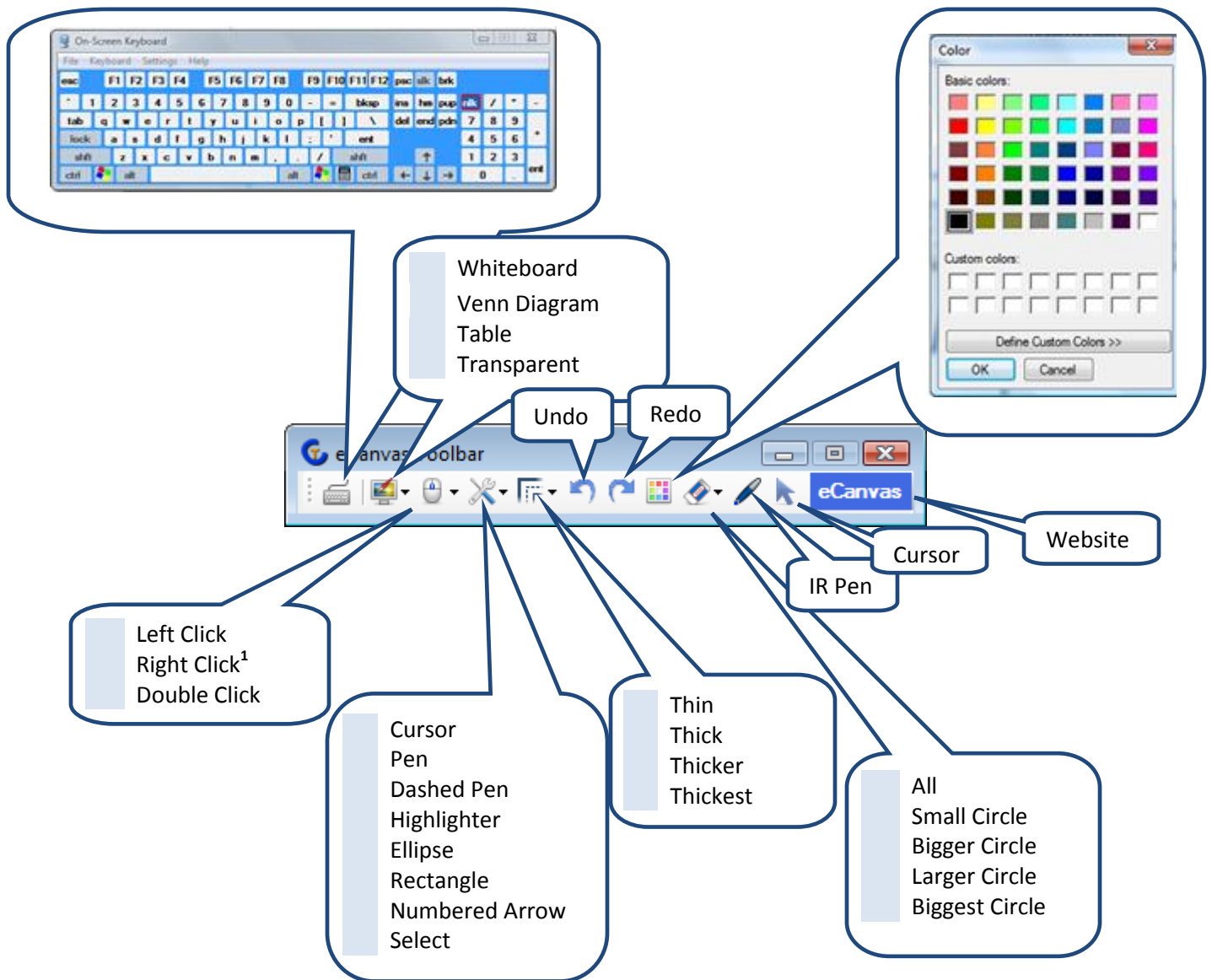
eCanvas Software Console



- 1 Minimizes eCanvas to the taskbar
- 2 Closes eCanvas application and prompts powering down of the Wiiremote.
- 3 Connect Wiimote Button initiates software to search and connect to your Wiiremote. (5 – 12 seconds may vary depending your system.)
- 4 Indicates Wiiremote Power Level
- 5 Calibrate eCanvas Interactive Whiteboard
- 6 Launch Annotated Toolbar
- 7 Tracking Utilization – indicates active surface area from the center point of the screen and the tracking utilization square.
- 8 Link that navigates to eCanvas website.

[Top](#)

eCanvas Toolbar



1. Right Click can be achieved by using the Toolbar Menu or by holding down the IR Pen Button for 3 seconds.

[Top](#)

Bluetooth Installation Setup Guide

Step 1: Inserting External Bluetooth Adapter



Step 2: View your Taskbar for the following (may vary depending on your System and Windows version.)

1st

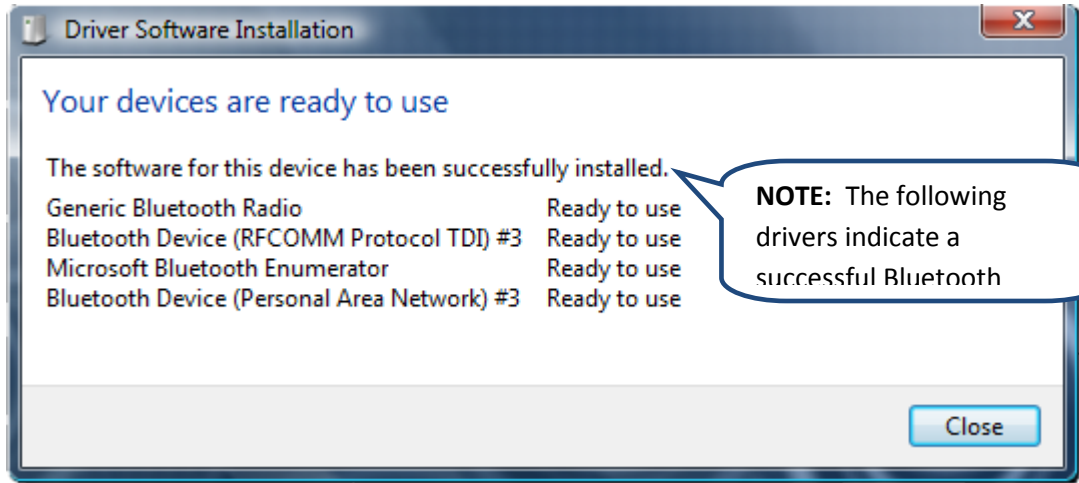
2nd

3rd

4th

Note: The following messages will appear in the system tray as you insert the External Bluetooth Adapter. The messages indicate the successful recognition and installation of Bluetooth Drives required.

5th



[Top](#)

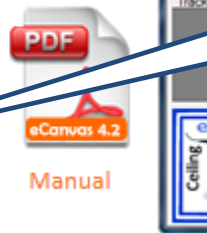
eCanvas: Downloading and Software Installation Guide

Step 1: Downloading Zip file from the Website

- Three Easy and Simple Steps.
- Toolbar lines are Crisp and Clear.



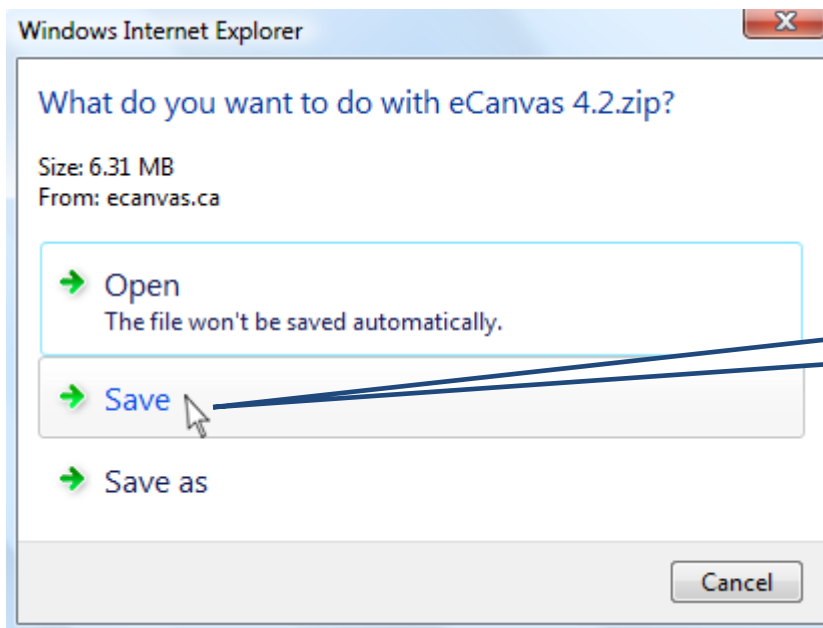
eCanvas 4.2 Calibration Software



Click the Image to start downloading.

Please review the Manual before installing and starting the

Step 2: Saving eCanvas 4.2 to your downloading folder.



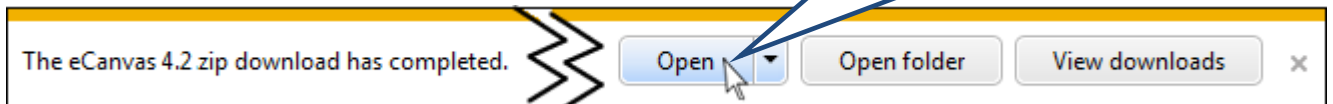
Click the Save tab.

Step 3: Downloading Zip file from the Website

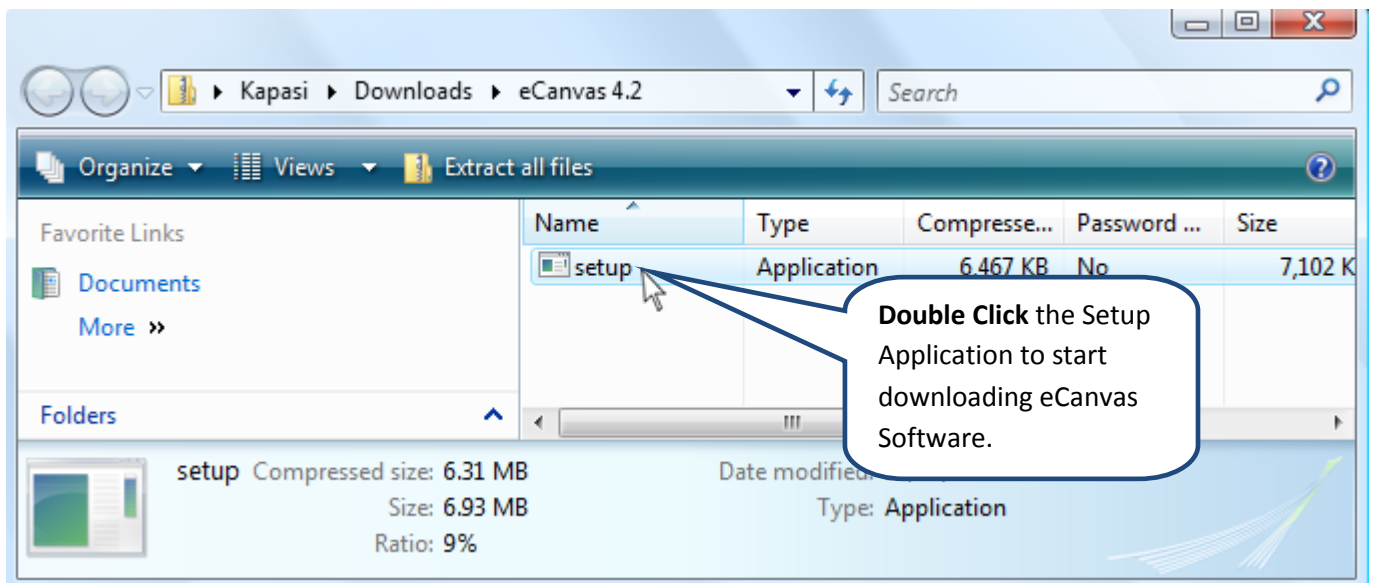
At the bottom of the screen, there will be a message indicating the Software is downloading.



Click the **Open Button** to view the Setup Application.



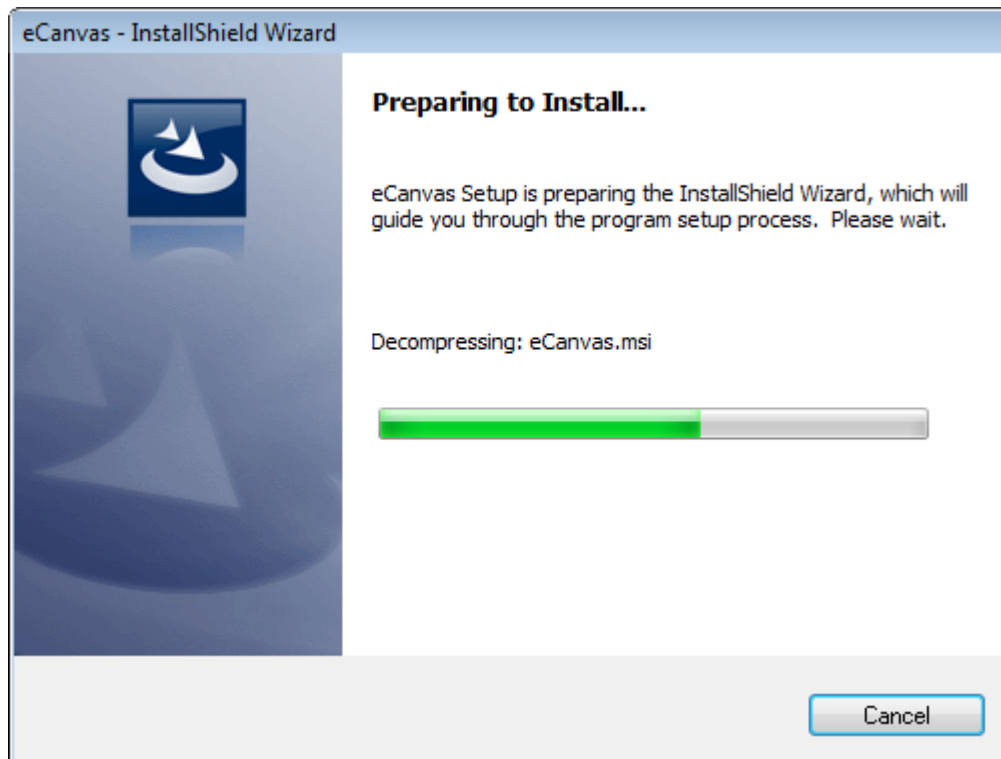
Step 4: Launch the Setup Application.



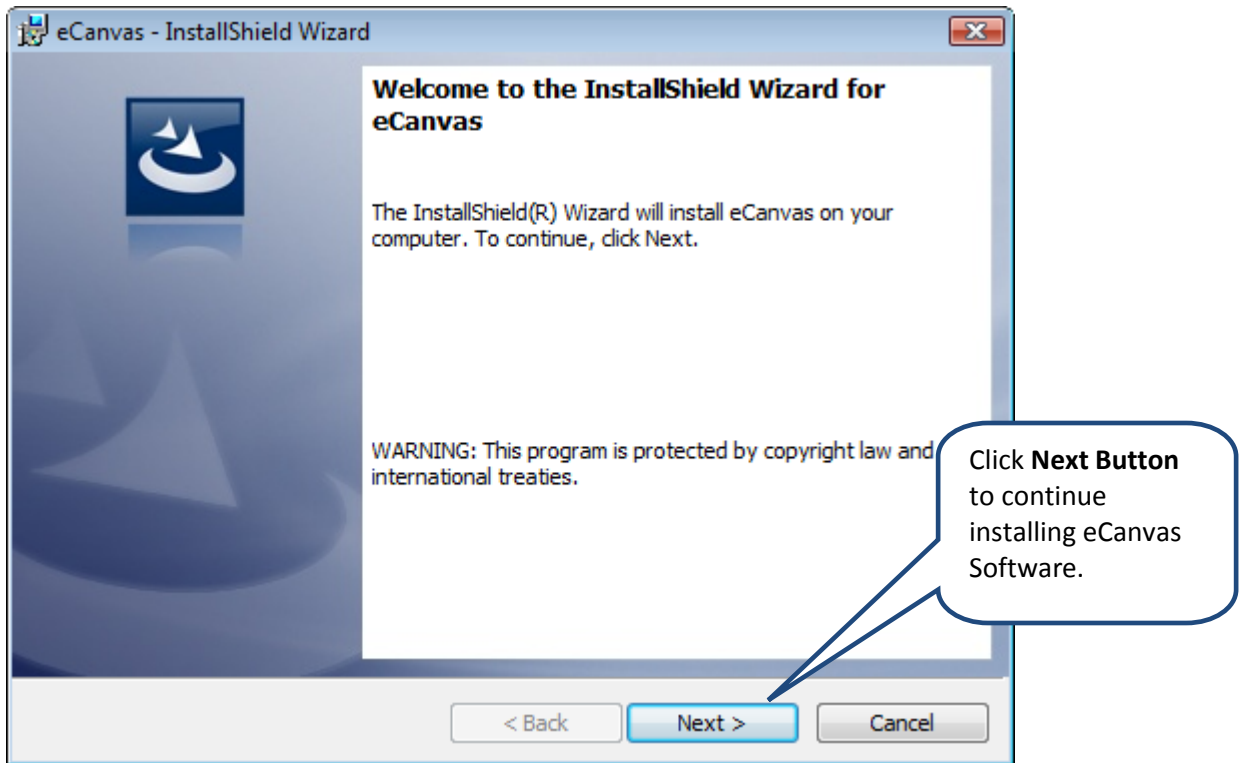
Step 5: Run the Installation



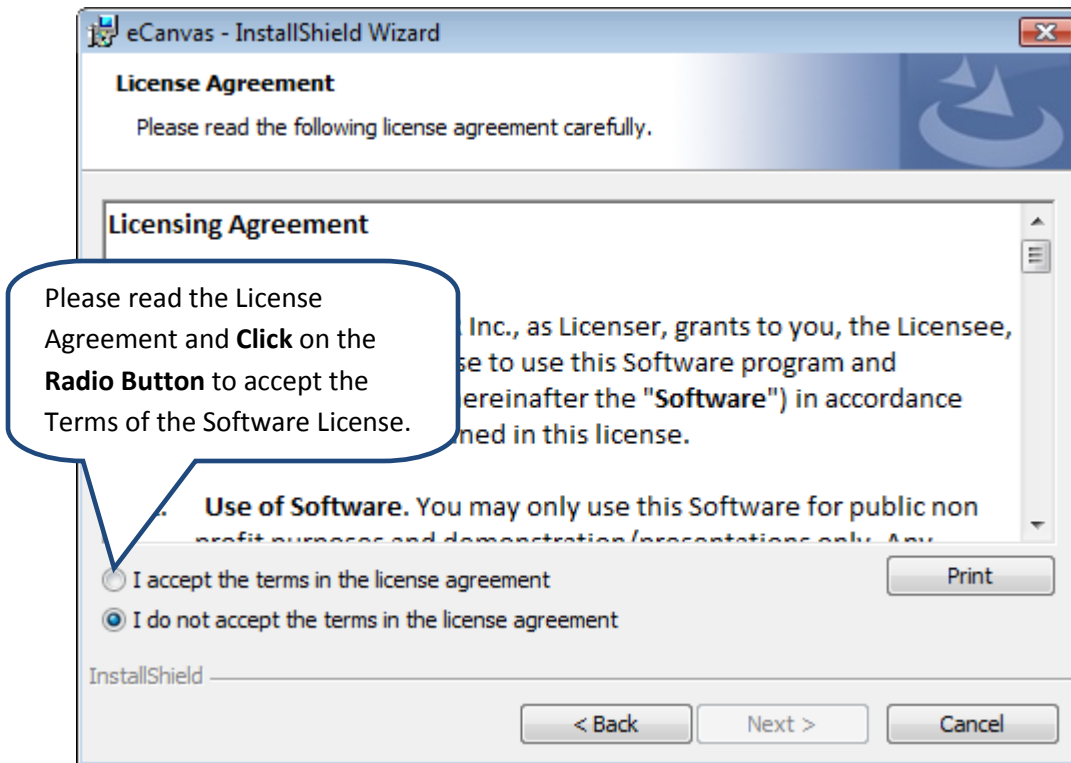
Step 6: Automatically Prepares the Installation Wizard



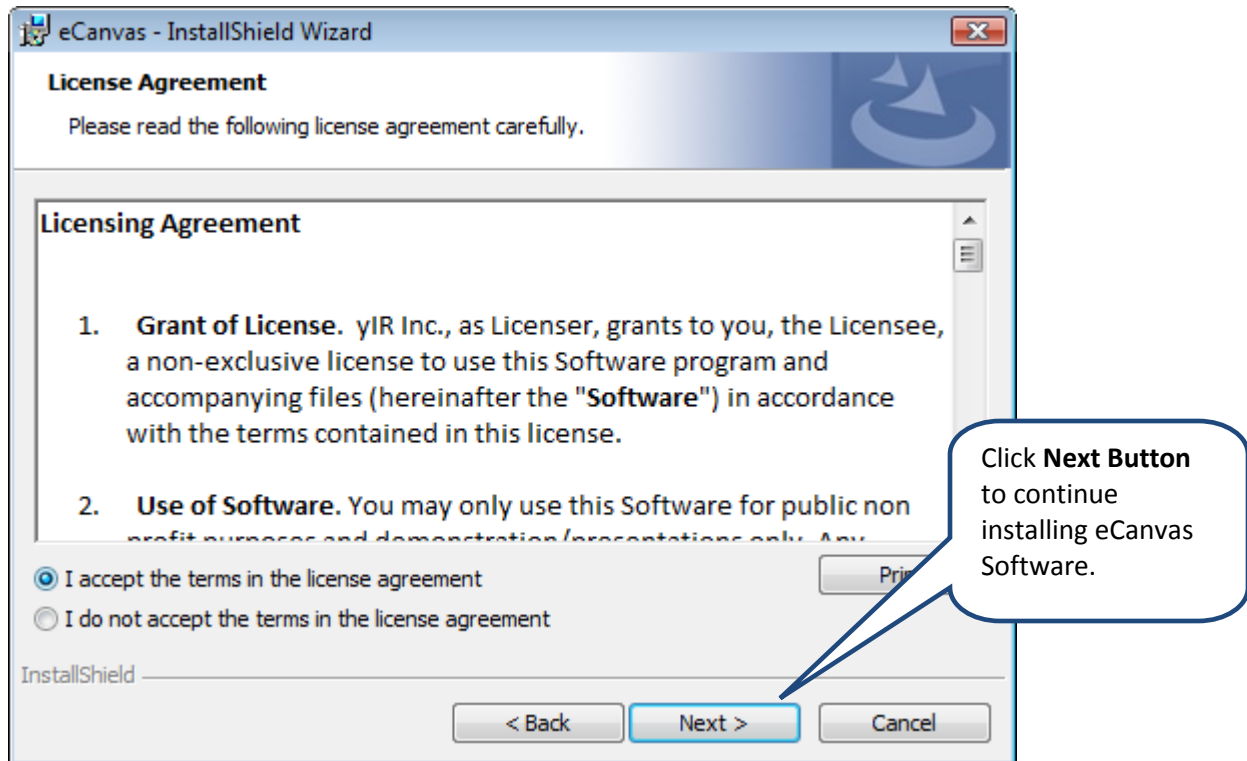
Step 7: Install eCanvas Software



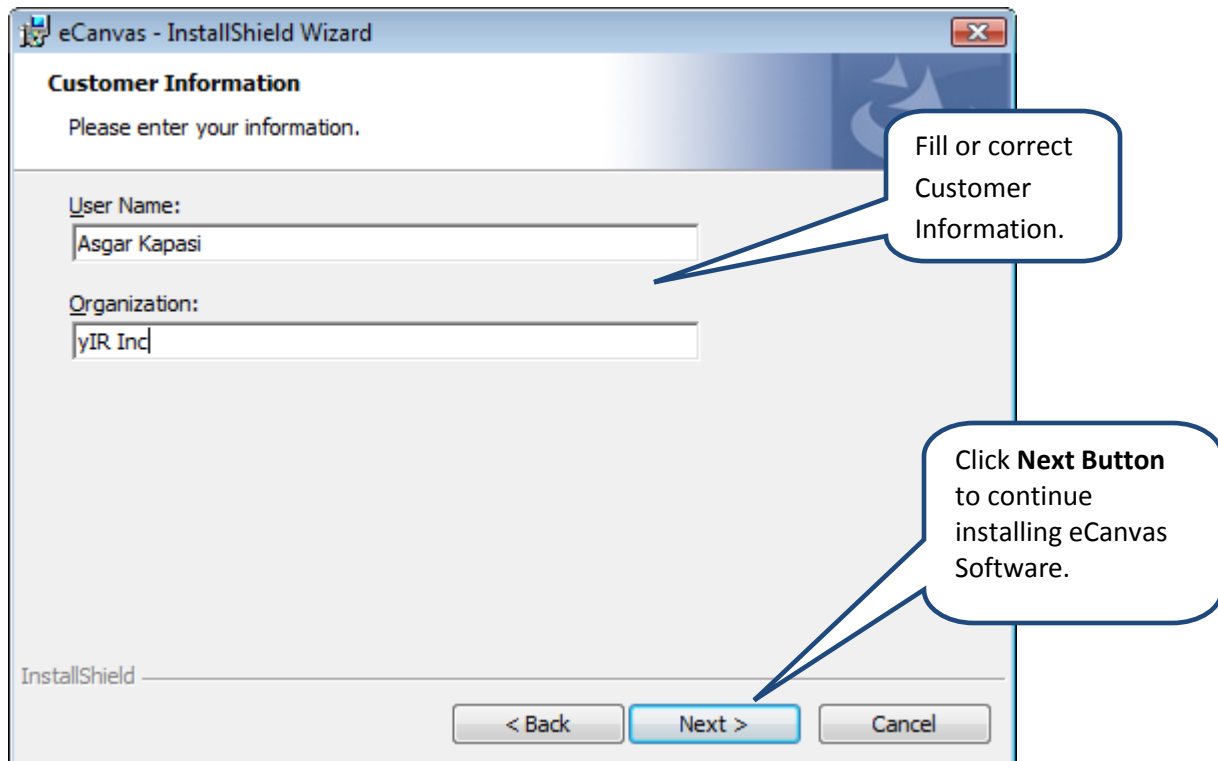
Step 8: License Agreement



Step 9: Accepting Licensing Agreement



Step 10: Add or Edit Customer Information



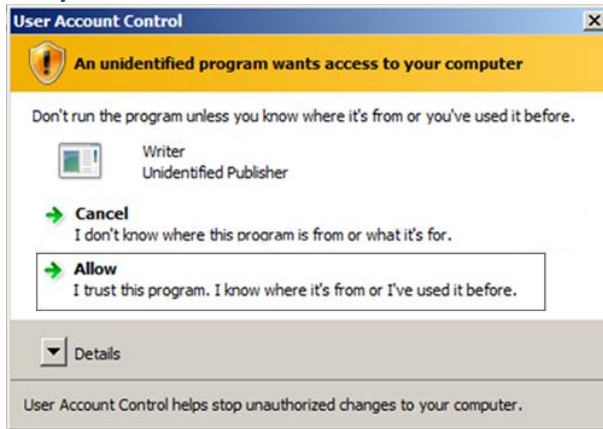
Step 11: Allow your Security Software to Download eCanvas Software

Depending on your Computer's Security Software and/or Level of Privacy/Security, a User Account Control Pop-Up Window may appear informing you that eCanvas Software needs your permission to download. Please accept the eCanvas Software download.

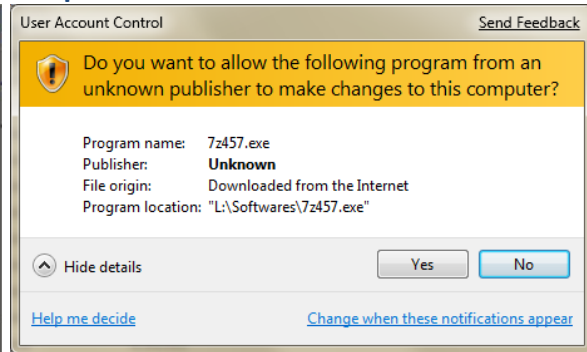
Sample 1



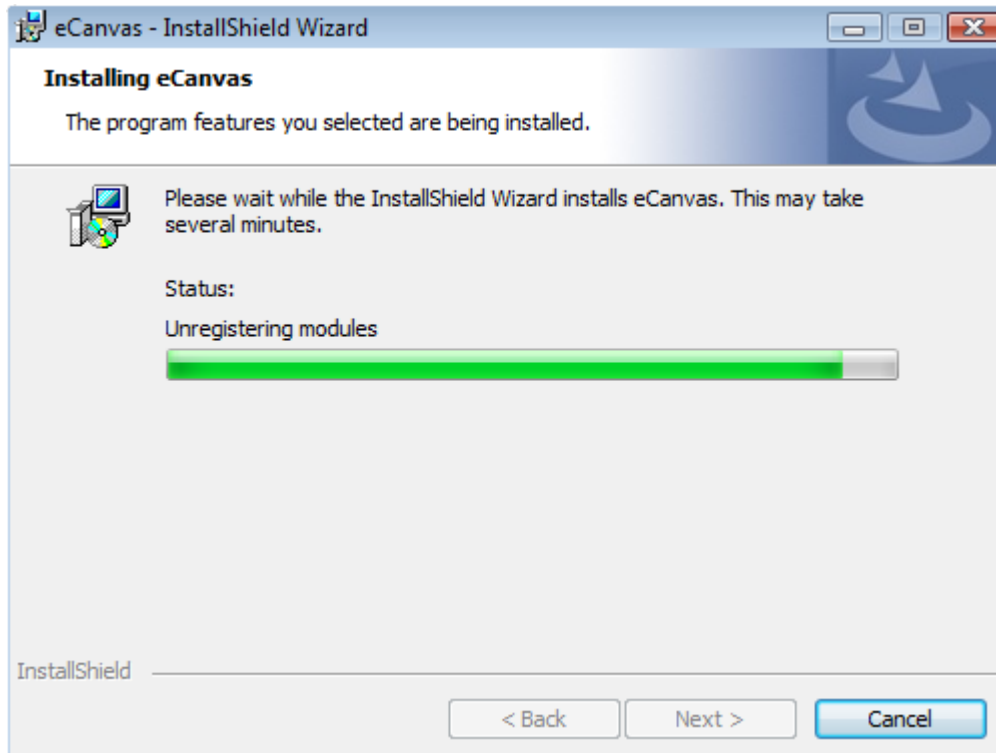
Sample 2



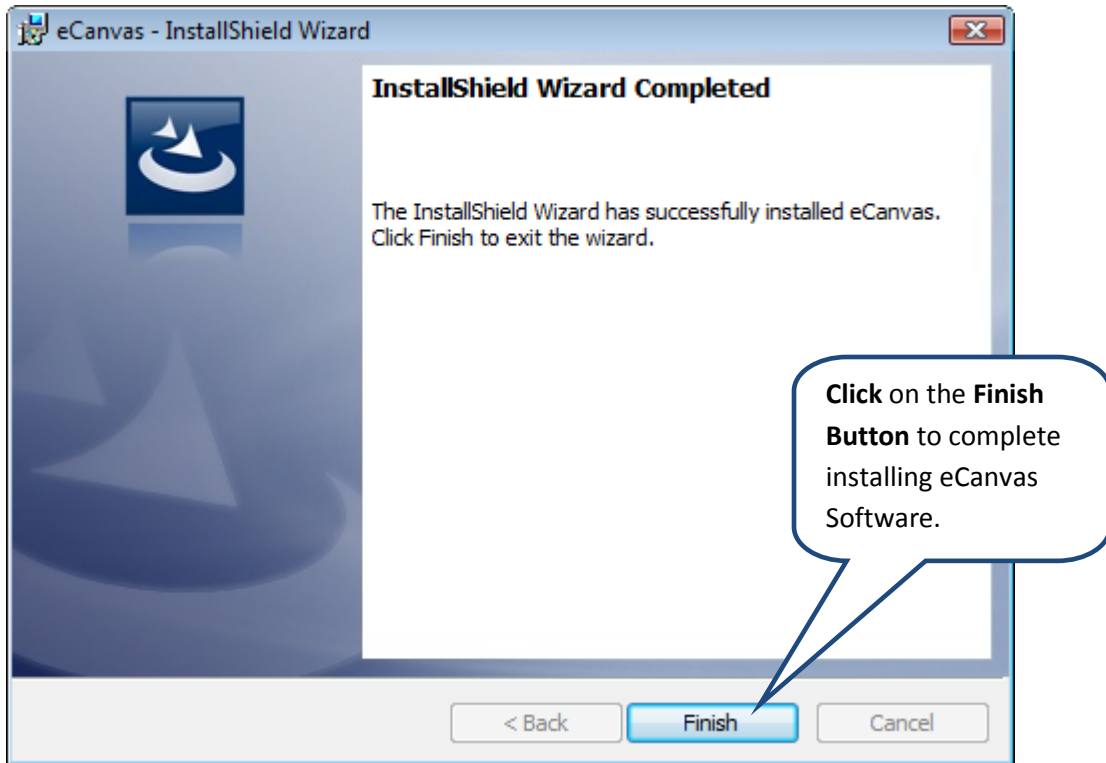
Sample 3



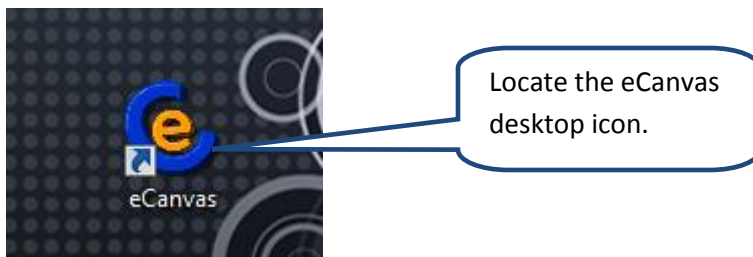
Step 12: Automatically Installs Software Components



Step 13: eCanvas Software Completely Installed



Step 14: eCanvas Icon on the Desktop



[Top](#)

Running your eCanvas Interactive Whiteboard System

Reminder to initially install the following before starting your eCanvas Software for the first time:

- [Microsoft .NET Framework 3.5](#)
- [Microsoft .NET Framework 3.5 \(with Service Pack 1\)](#)
- [Microsoft .NET Framework 4.0 Client Package](#)
- [Microsoft .NET Framework 4.0 Full package](#)

(You will need to restart your computer after installation to ensure Microsoft .NET Framework files are saved correctly.)

Launch eCanvas Application



Locate the eCanvas icon on the desktop.
Double Click to launch eCanvas Software with your computer mouse.

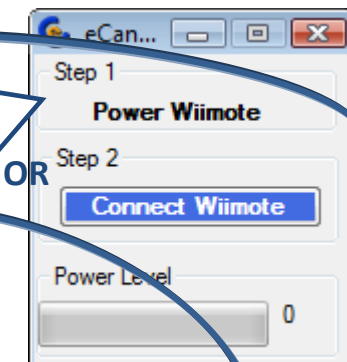
Step 1: Power Wiiremote

Power Wiiremote using eCanvas Power Remote Controller, and **pressing the ON button.**

Or
Manually **pressing 1 & 2** buttons on the Wiiremote.

The Wiiremote will have all 4 LED lights blinking when it is put into discovery mode by powering the Wiiremote.

Quickly move to Step 3.



OR



Step 2: Connect eCanvas Software with Wiiremote

Insure your Bluetooth Adapter is inserted into the USB Port . **Click Connect Wiimote** with your computer mouse.

eCanvas
Click To Connect Bluetooth

eCanvas software has successfully connected with your Wiiremote, when Step 1 indicates, **Wii Powered**.

Simultaneously, you will notice your computer installing the Bluetooth Drivers automatically on the system tray.

Installing device driver software
Click here for status.

Adobe Fire... eCanvas

Step 2

Power Level 78 %

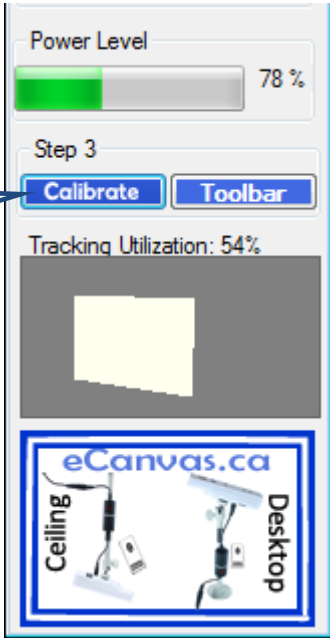
Wii

When successfully connected, the Power Level will indicate a percentage above 75%.


LED Lights 1 and 4 will be solid on the Wiiremote.

Step 3: Calibrate eCanvas

Click the Calibrate Button using your computer mouse to calibrate your screen.



Use your IR Pen to click on all four crosshairs to calibrate your screen from top left to right and bottom left to right.



Important: If you skip a crosshair, press the ESC Key on your keyboard and restart Step 3 again.



Click the Toolbar Button to launch the Toolbar onto the desktop with your IR Pen or computer mouse.

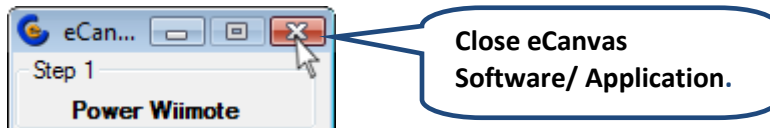
[Top](#)

Trouble Shooting Guide

Wiimote Connection Error - Fix

The following steps should resolve most connection errors. Please follow the steps accurately and precisely to ensure a successful restart of the eCanvas Software.

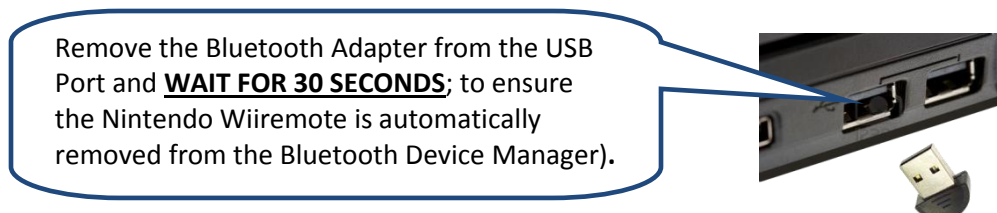
Step 1:



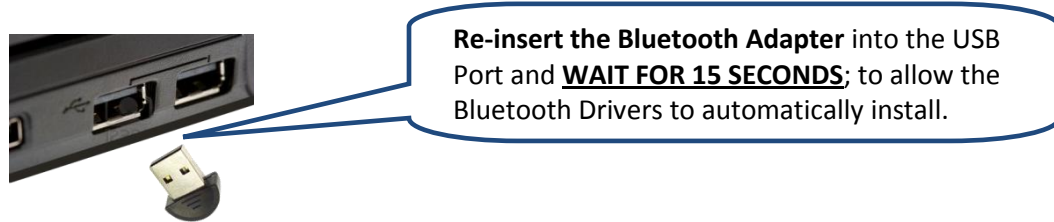
Step 2:



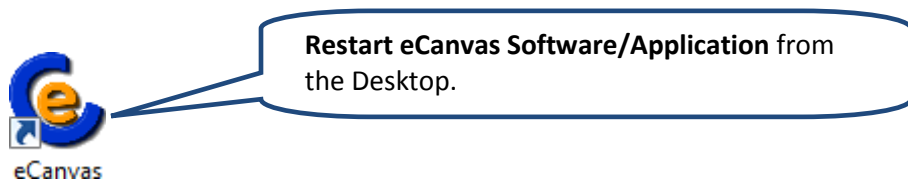
Step 3:



Step 4:



Step 5:



(If an error occurs, it is most commonly caused by eCanvas.DLL)

[Top](#)

Inactive State of eCanvas Toolbar (Microsoft Toolstrip Control): - Fix



Toolbar is in an inactive state (ie. eCanvas Toolbar taskbar application is not depressed/inactive state).




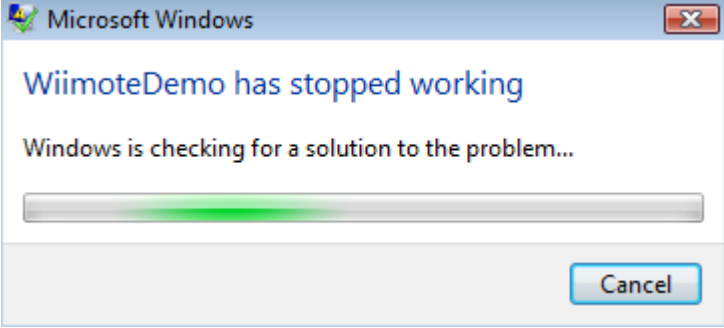
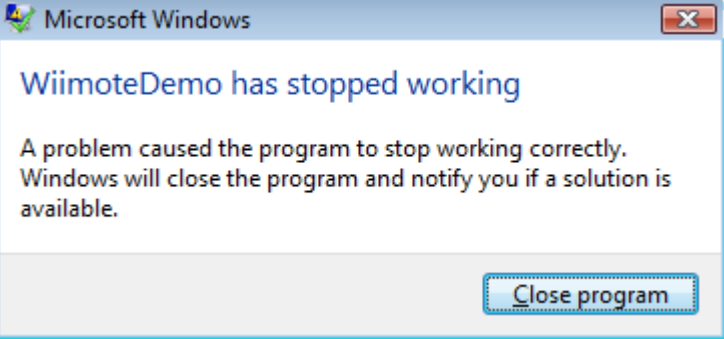
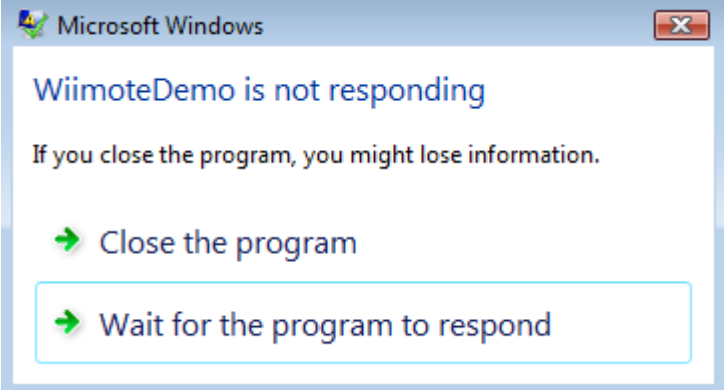
Fix: Use the IR Pen or computer keyboard to depress the eCanvas Toolbar application in the taskbar to activate the Toolbar and regain Toolbar function.

[Top](#)

“WiimoteDemo has stopped working” Error Message - Fix

The WiimoteDemo Error Message appears when the user clicks 1 or more times to close the program or clicks on other parts of the console while the Software is in the closing process. The User will see the following sequence of screens:

Fix: Please do not continuously click the computer mouse or IR Pen repeatedly to assist the software in closing the application faster; it causes the following error. **Please, CLICK ONCE to close () the application.** The application takes time to close MS .NET Framework 3.5 and 4.0 and the Libraries used to run eCanvas 4.2.

1. 
2. 
3. 

[Top](#)